

record FTA 20

automatic folding doors



record FTA 20



record
your global partner for entrance solutions

record FTA 20

automatic folding doors

Brief Description

Our automatic folding doors and their variants use another design principle of automatic doors and are recognised internationally as a market leader. The smooth and swift operation is particularly evident in Secured Exit Lanes in many of Australia's major airport terminals.

record FTA 20

If there is only limited space for door leaves to open in the passage area, which excludes the use of sliding doors, an automatic folding door provides a good solution.

The width of passage can be almost fully retained. Automatic folding doors can be retrofitted relatively easily; they are designed to work particularly well when fitted in corridors. Depending on the total width available, the folding door is built as one- or two-sided.

Typical applications for the record FTA 20 can be found in restaurants in the passage to the pantry, for example, or from the kitchen to the dining area, but a recent trend is to use the door to implement no smoking laws by separating non smokers from newly set up smoking lounges.

record FTA 20 FBO

A special feature is the optional break-out function (FBO), permitting the record FTA 20 to be used as an escape door. As with the TOS (Total Opening System) of our automatic sliding doors, the FBO enables folding doors to function as emergency exits by opening in the direction of escape as quickly as possible.

The FBO folding door was specially developed for use in escape and rescue routes. In normal use, the door panels fold inwards. In emergencies, access to escape and rescue routes is provided by light pressure on the door panel. This frees the track from its mountings, allowing the door panel and track to open outwards.

Applications

The record FTA 20 folding door system is used in Secured Exit Lanes throughout Australia's major airports and is ideal for narrow passageways in restaurants, supermarket, hotels, business headquarters, hospitals and aged care facilities.

Standard details

- Aluminium frame and cover available in anodised and powdercoat colours
- record BDE-D: the electronic remote control unit with back-lit graphic display enables easy setting of individual parameters (speed, hold open time etc.), and other additional functions.

Trigger devices

- radar / infrared detectors, switches, swipe card etc.

Basic functions:

- automatic operation
- one way traffic
- continuously open
- manual control
- interlock function
- operating lock
- automatic reverse

Options:

- interlock control
- emergency cut-off function
- remote control and surveillance
- night control
- bell option
- door leaf surveillance
- key operated contact
- module for extended functionality

Assembly variants:

- Wall or beam assembly

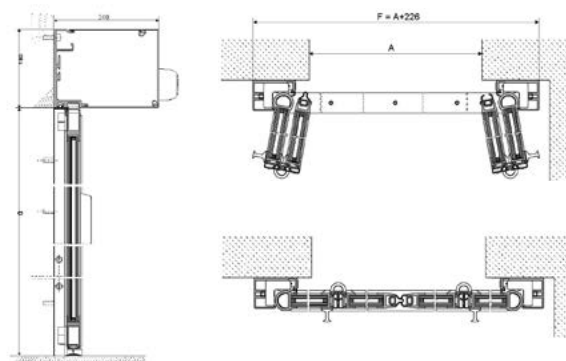
Technical Specifications

Door operating speed:	up to 0.7 m / s (adjustable)
Operating housing dimension:	H x D: 180 x 240 mm
Power supply:	230VAC / 50 / 60Hz
Power consumption:	100W max, 20W idle mode
Ambient temperature:	- 15 °C to + 50 °C

Recommended Application Limits

Door type:	Single Sided	Double Sided
Opening width:	800 – 2000mm	800 – 2000mm
Passage height:	2500mm	2500mm
Door leaf weight:	2 x 38 kg	4 x 38 kg
Recommended for:	narrow entries, security entrances	

Drawings



Compliance

record FTA 20 operators meet the Building Code of Australia (BCA) requirements and are tested to stringent European standards DIN EN16005 (durability and safety).

record complies with the design, safety and functionality guidelines of the non-legislative Australian Standard AS5007:2007.