

# record Revolving Doors



PRODUCT PORTFOLIO



# ABOUT

Australian designed and manufactured, fully customisable and suitable for all architectural requirements, record revolving doors are available in a range of styles, sizes, features and finishes.

Regardless of your situation, budget or specifications, record can provide a prestigious and practical airlocked entrance door, for your commercial or institutional building.

## Why should you choose a record revolving door for your entrance?

- record, through its previous history as AGP Door Systems, has been the dominant market leader for revolving doors in Australia and New Zealand since 1996. Its doors boast a strong history of reliable and durable performance.
- The Fullview, Hybrid, Custom, Crystal and Diamond Series are purpose made and built in record's Sydney factory. The K21 is imported from the worlds leading quality revolving door manufacturer, and record subsidiary, Blasi.
- record doors can be made to height and diameters to the nearest millimetre, with the ability to modify the design of both the door structure and the drive system to accommodate the largest door sizes available in the market.
- record doors are supported with an Australia and New Zealand wide network of automatic door service companies.

## record revolving doors have many features distinguishing them from other doors on the market.

- They are architecturally designed with the highest quality finishes, ensuring years of durability. All claddings are folded over to ensure neat finishes with minimal visible fixings.
- The Fullview and Crystal Series can be engineered to support highlight glazing systems, negating the need for additional portal frames around the door.
- Superior standard features, such as a rotating inner ceiling with downlights, clean canopy cladding lines, structural silicon glazing and ceiling and roof panels finished in the same material as the rest of the door.
- They can be built to the specific requirements of the client with an impressive range of optional features, including automatic windback door wings, automatic "clamshell" night doors, integrated roof drainage and custom lighting feature.
- All doors feature a range of concealed infrared and contact safety sensors on the canopy and rotating carousel to ensure a full suite of safety features does not result in a compromise on door aesthetics.







Please click on any of the images or link boxes for further information via our website or social media pages

#### LINKS:



WEBSITE



INSTAGRAM



YOUTUBE



LINKEDIN

this page **HYBRID** 140 Sussex Street, Sydney [2019]

cover page **DIAMOND** 839 Collins Street, Docklands [2019]

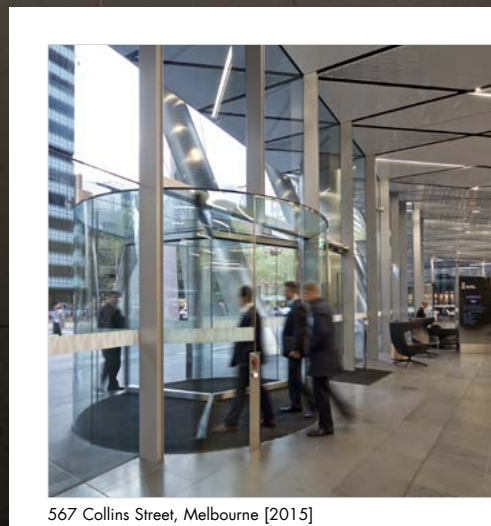


The Diamond Series is the result of record's former company, AGP Door System's experience in the areas of revolving door technology and structural glass engineering. It has quickly become an architectural favourite for its ability to seamlessly integrate with, and complement, frameless glass assemblies.

This door was developed as a result of popular demand for the most frameless revolving door possible and its clean and uncluttered appearance, belies the complication of its design.

The entire door structure of the Diamond Series is designed to be self supporting, with the glass roof structurally glazed to the glass sidewalls, whilst still accommodating the dynamic loads of the rotating carousel. There is no requirement for any kind of portal frame or perimeter ring beam to provide structural support to the door.

The drive motor can be mounted in a pit in the concrete slab or, if there is a suspended slab, to the underside for ease of access when servicing.



567 Collins Street, Melbourne [2015]



200 George Street, Sydney [2016]



44 Market Street, Sydney [2019]





St Georges Square, 225 St Georges Terrace, Perth [2017]



31 Dalmore Drive, Scoresby [2019]



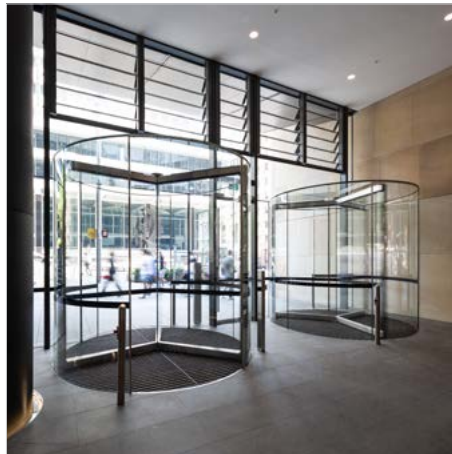
One Melbourne Quarter, 699 Collins Street, Docklands [2018]



George Place, 363 George Street, Sydney [2018]



100 Mount Street, North Sydney [2019]



60 Martin Place, Sydney [2019]



171 Collins Street, Melbourne [2013]



200 St Georges Terrace, Perth [2015]



International Towers 1, 100 Barangaroo Avenue, Sydney [2017]

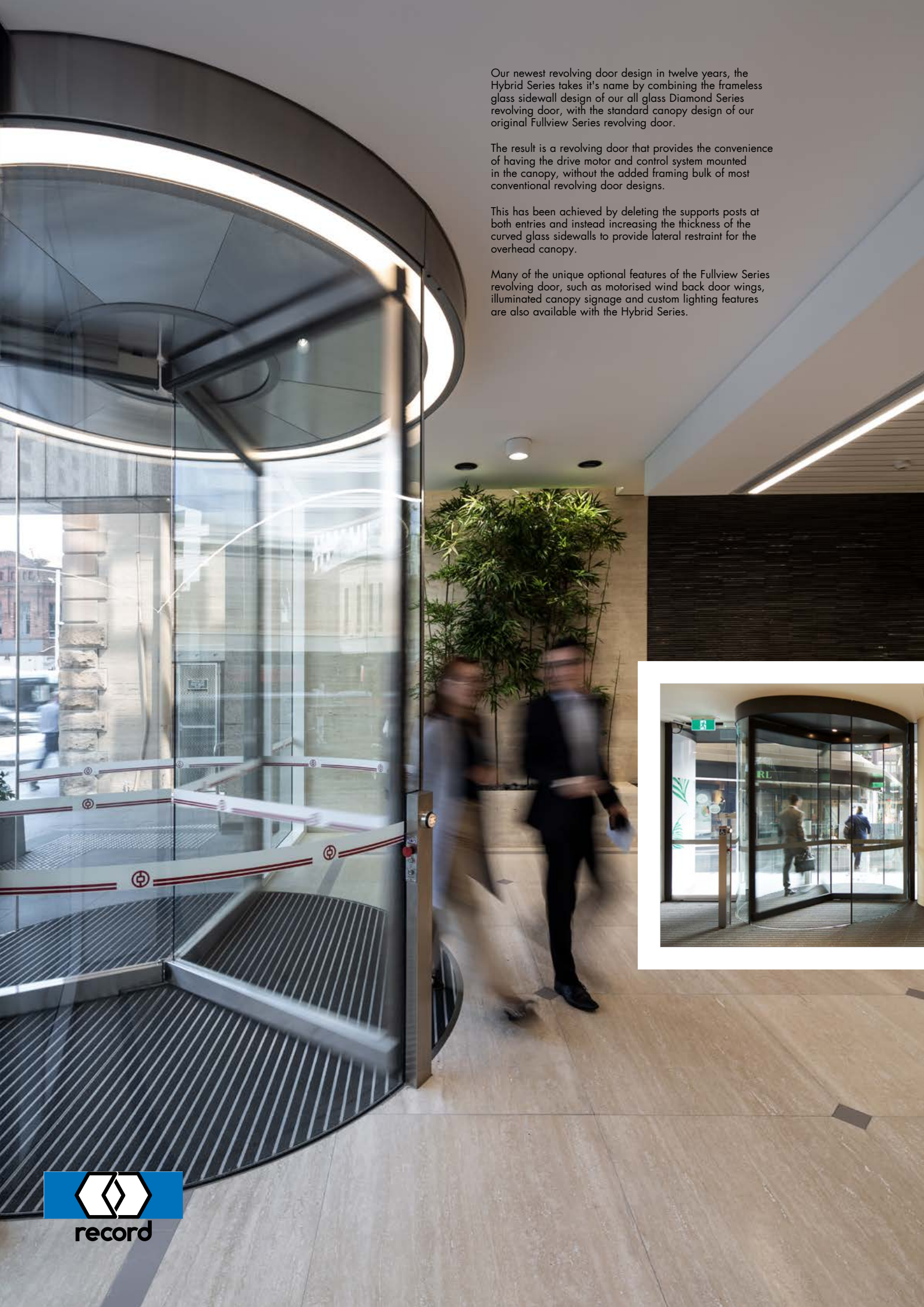


Our newest revolving door design in twelve years, the Hybrid Series takes its name by combining the frameless glass sidewall design of our all glass Diamond Series revolving door, with the standard canopy design of our original Fullview Series revolving door.

The result is a revolving door that provides the convenience of having the drive motor and control system mounted in the canopy, without the added framing bulk of most conventional revolving door designs.

This has been achieved by deleting the support posts at both entries and instead increasing the thickness of the curved glass sidewalls to provide lateral restraint for the overhead canopy.

Many of the unique optional features of the Fullview Series revolving door, such as motorised wind back door wings, illuminated canopy signage and custom lighting features are also available with the Hybrid Series.







595 Collins Street, Melbourne [2019]



The Eastbourne, 280 Albert Street, East Melbourne [2019]



140 Sussex Street, Sydney [2019]



360 Collins Street, Melbourne [2017]



Forensic Medicine & Coroners Court Complex, Lidcombe [2018]



20 Customhouse Quay, Wellington [2018]





The benchmark revolving door for the Australian market since 1995, the record Fullview Series is an exceptional locally manufactured all purpose entrance door suitable for any building type and many different applications.

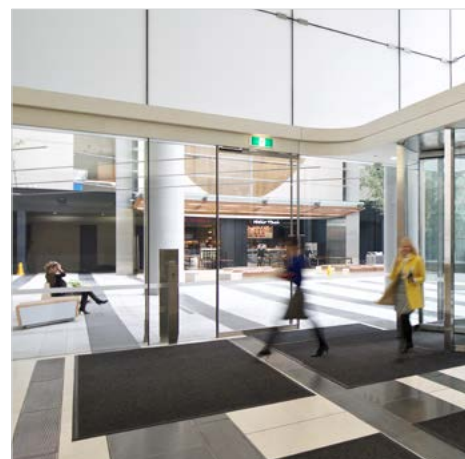
The electrical motor drive and control system is mounted in the canopy for easy access and service. The canopy can be finished in a range stainless steel and aluminium finish options.

Every Fullview door is fitted, as standard, with a range of electronic safety sensors to ensure optimum safety at all times. Setting record revolving doors apart from the competition is that these sensors are concealed, including the top rail infrared sensor and the bottom rail contact sensor.

A large number of unique and innovative options and engineering initiatives are available to allow each door to be custom built to suit your specific requirements and these include support of overhead glazing systems, custom lighting features as well as integrated night shields, motorised wind back door wings, suitable for free air intake or emergency egress, and illuminated canopy signage.



1 McNab Avenue, Footscray [2013]



DIAMOND 839 Collins Street, Docklands [2019]

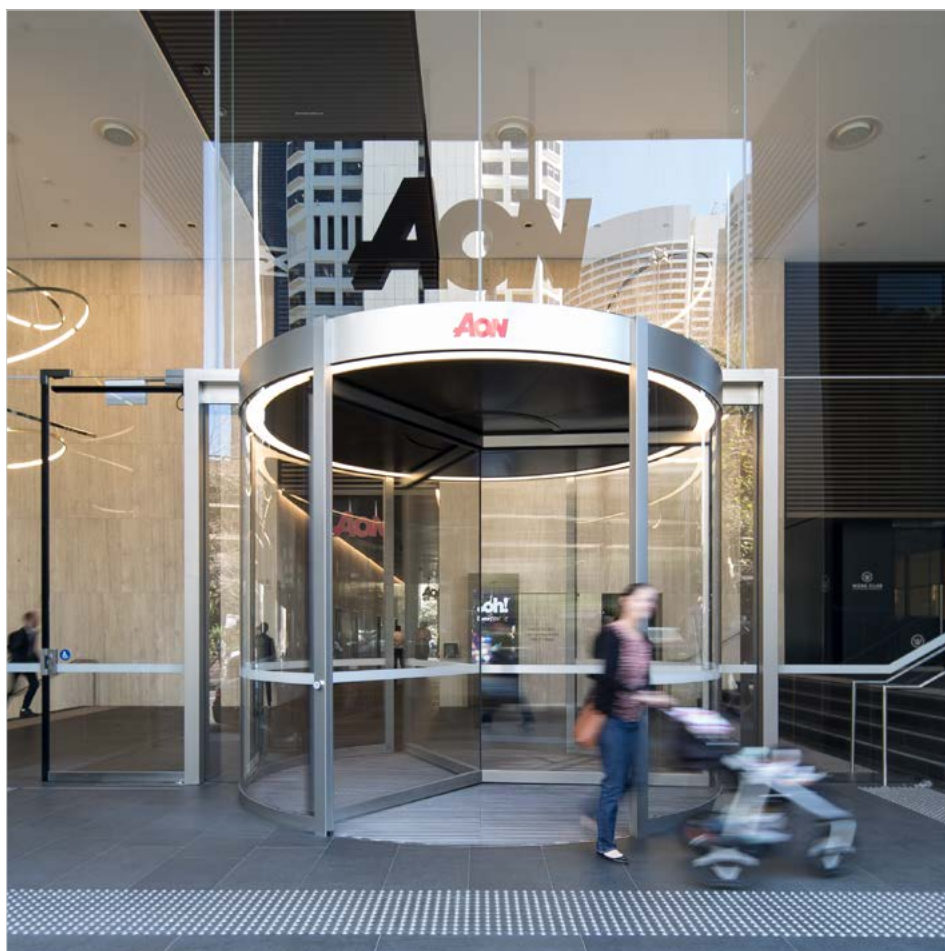




77 Athllon Drive, Greenway [2017]



Northpoint, 100 Miller Street, North Sydney [2018]



AON Tower, 201 Kent Street, Sydney [2018]



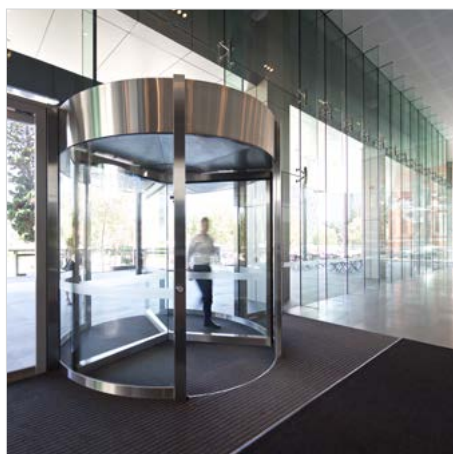
Melbourne Law School, 185 Pelham Street, Carlton [2018]



242 Exhibition Street, Melbourne [2010]



ANZ Tower, 161 Castlereagh Street, Sydney [2013]



Golden Square, 32 St Georges Terrace, Perth [2014]



Casselden, 2 Lonsdale Street, Melbourne [2012]



In an industry pushing off the shelf imported products, record stands alone as a local manufacturer of revolving doors that are uniquely designed for every project. We like to be challenged to push the boundaries of what a revolving door entrance can become and the record Custom Series epitomises this ethos.

record Australia's team of experience tradespeople and managers will work with a client to deliver on a large number of innovative options and engineering initiatives, including full or partial cladded sidewalls, extended canopy heights and unique ceiling lighting features. With this experience there are very few design concepts outside the realm of possibility.

With the record Custom Series, the revolving door design is not intended to blend in with the surrounding architectural finishes, it's a prominent entrance feature, creating a striking first impression. All this whilst utilising the full range of concealed electronic infrared and contact safety sensors to ensure optimum safety at all times.







Grosvenor Place, 225 George Street, Sydney [2009]



363 George Street, Sydney [2000 - 2017]



417 St Kilda Road, Melbourne [2019]



Sofitel Sydney, Darling Harbour [2017]





Offering the ultimate in customisable revolving door design, the record Crystal Series features an elegant glass roof and slimline stainless steel portal frame that allows for various glass fixing and support options to suit the architectural requirements of the client and the design of the surrounding glazing. The result is a modern spacious appearance to the entrance foyer of any building.

The Crystal Series can also be engineered to suit greater diameters and heights than the Diamond Series, with the added potential of the door being specifically designed to support the dead loads and wind loads of the highlight glazing.

In the past this design has also allowed record to personalise the appearance of the Crystal door, allowing it to match the look of the surrounding facade, with the use of stainless steel spider fittings support the roof and sidewall glazing from the support structure.





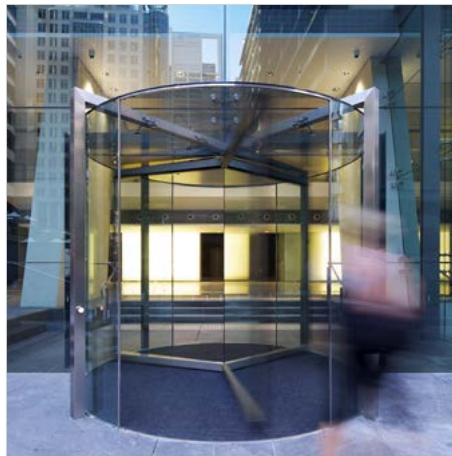
1D Homebush Bay Drive, Rhodes [2003]



420 George Street, Sydney [2013]



Collins Square Tower 1, 737 Collins Street, Docklands [2013]



20 Bond Street, Sydney [2012]



3 Rider Boulevard, Rhodes [2006]



Deloitte Centre, 80 Queen Street, Auckland [2010]



Novotel Auckland Airport, Auckland [2012]



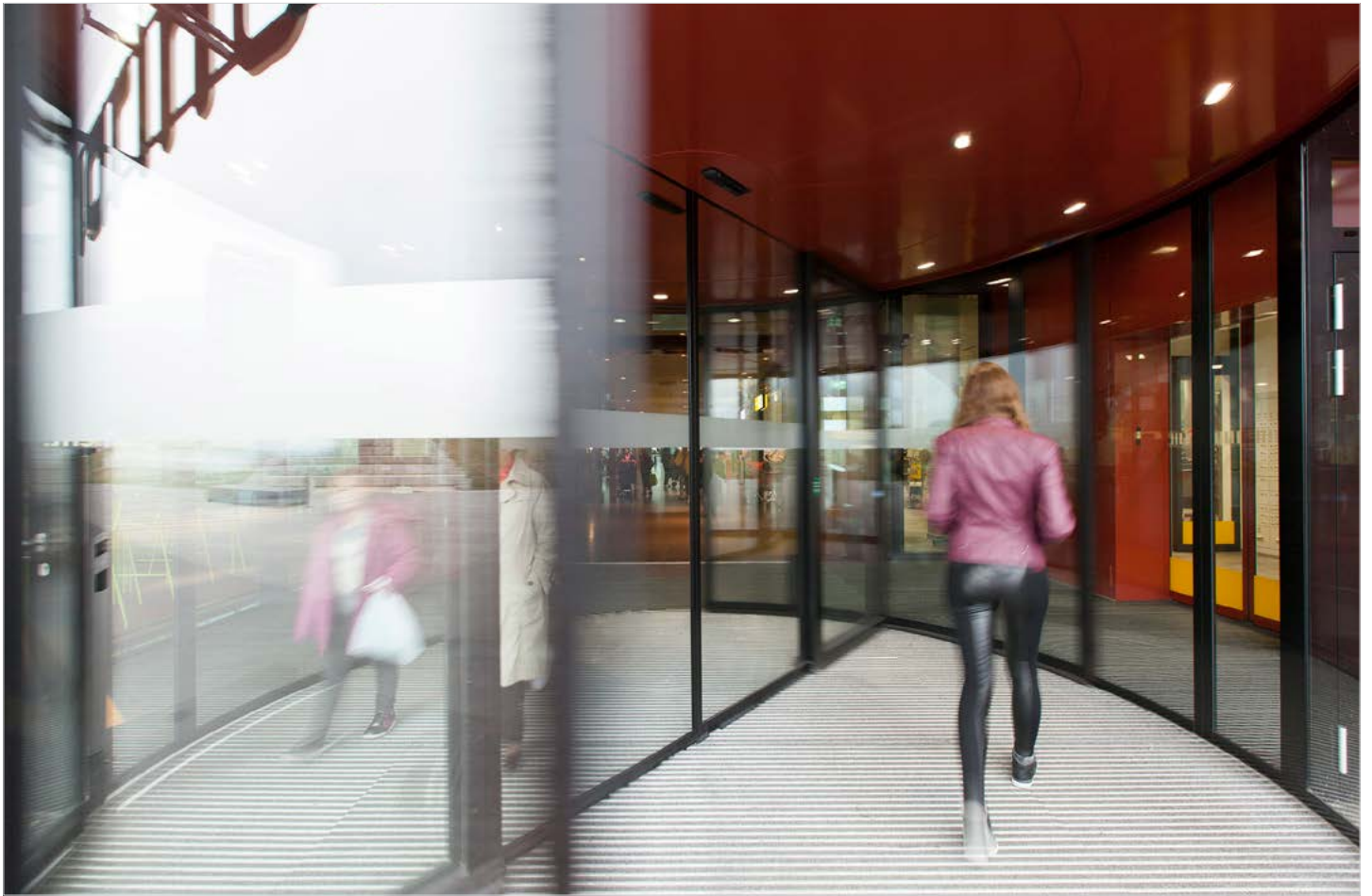
The K21 is a special two wing revolving door which provides spacious compartment areas to enable large numbers of people to use the door, while also making the door easier for users with shopping or luggage trolleys, for courier deliveries, elderly people and wheelchair users. It does all of this while still providing the environment benefits, and foyer comfort levels, of an air-locked entrance.

As many building managers only want the airlock benefits of a revolving door during the very hot and very cold windy times of the year, it's ability to convert to an automatic sliding door entrance sets this door apart from the competition.

Standard inclusions are a full range of infrared and contact safety sensors to prevent the door from hitting an obstruction, as well as UPS battery backup to ensure continual operation during a power failure and to enable the door to provide free egress from the building in an emergency.







Australian Catholic University, Brunswick Street, Fitzroy [2013]



## Contact

### → Headquarters

agta record ltd - Allmendstrasse 24 - CH-8320 Fehraltorf, Switzerland - Tel.: +41 44 954 9191

### → Melbourne

117 Scanlon Drive, Epping VIC 3076 – Tel.: 1300 80 44 38

### → Sydney

30 Prince William Drive, Seven Hills NSW 2147 – Tel.: 1800 67 44 08

e-mail: [info@recorddoors.com.au](mailto:info@recorddoors.com.au) – [www.recorddoors.com.au](http://www.recorddoors.com.au) – [www.record.group](http://www.record.group)

