

Deloitte Centre. Auckland

Case Study



For the main entrance to the Deloitte Centre, built in 2009 at 80 Queen Street, Auckland, is a record Crystal Series revolving door.

To complement an impressive cable truss entry screen, the architects, Woods Bagot, worked with record Automatic Doors to develop a custom made Crystal Series revolving door that, for the first time, featured spider fittings to support the curved sidewalls, as well as the glass roof.

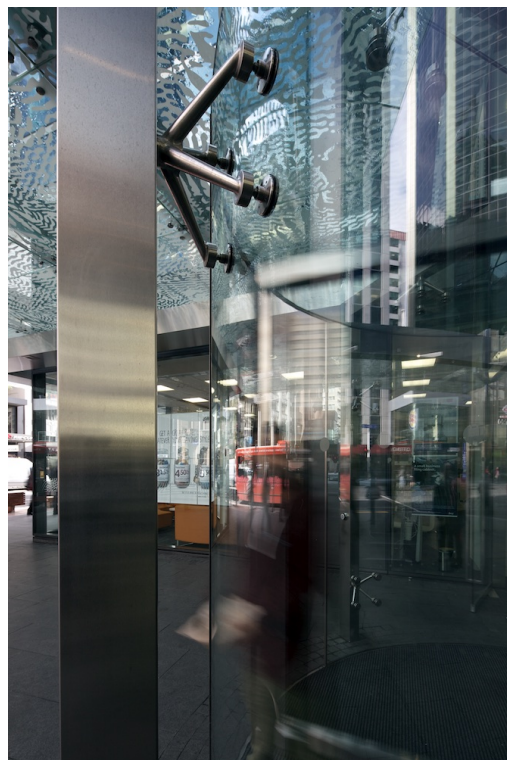
Deloitte Centre. Auckland

Case Study



Deloitte Centre. Auckland

Case Study



Deloitte Centre. Auckland

Case Study



Deloitte Centre. Auckland

Case Study

