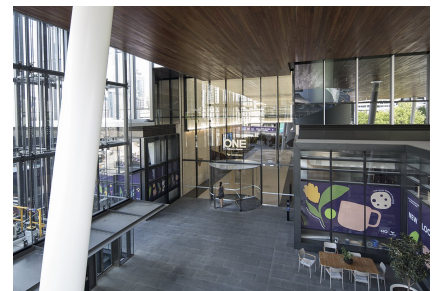
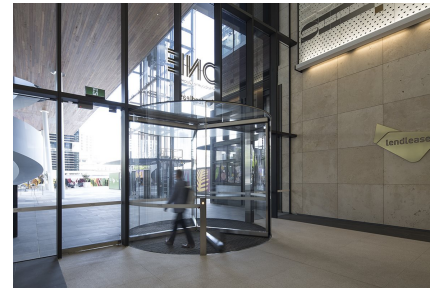


# One Melbourne Quarter

## Case Study



Located opposite Southern Cross Station in Melbourne's Dockland's precinct, Melbourne Quarter, developed and built by Lendlease, will combine commerce, community and expansive green public spaces to deliver Melbourne's smartest and most sustainable business address.

The first stage, One Melbourne Quarter, is a 13 storey commercial office tower designed by Denton Corker Marshall and is the new Victorian headquarters of Lendlease, in addition to Arup and AMP, housing up to 13,000 workers.

For the main lobby entries off Collins Street, Diamond Series revolving doors, 4000mm diameter, were selected by DCM due to their unique full frameless design and ability to mount the drive motors to the underside of the suspended slab for ease of installation for future servicing requirements.

# One Melbourne Quarter

## Case Study





# One Melbourne Quarter

## Case Study



# One Melbourne Quarter

## Case Study

