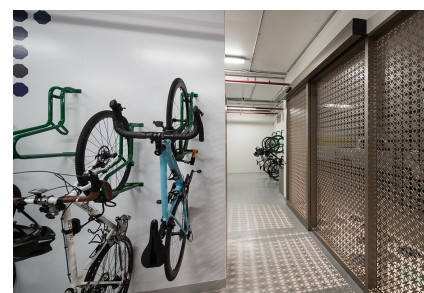
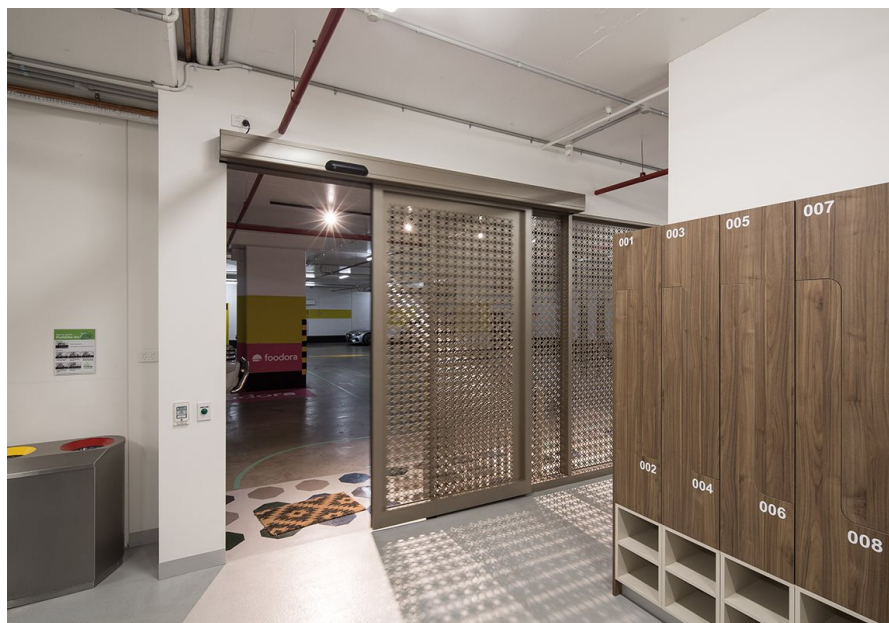


101 Miller Street, North Sydney

Case Study



Enfold Projects in conjunction with Mirvac, the building owner, have delivered an iconic End of Trip Facility at 101 Miller St, North Sydney. This stunning facility has just made pounding the pavement and riding to work a little easier.

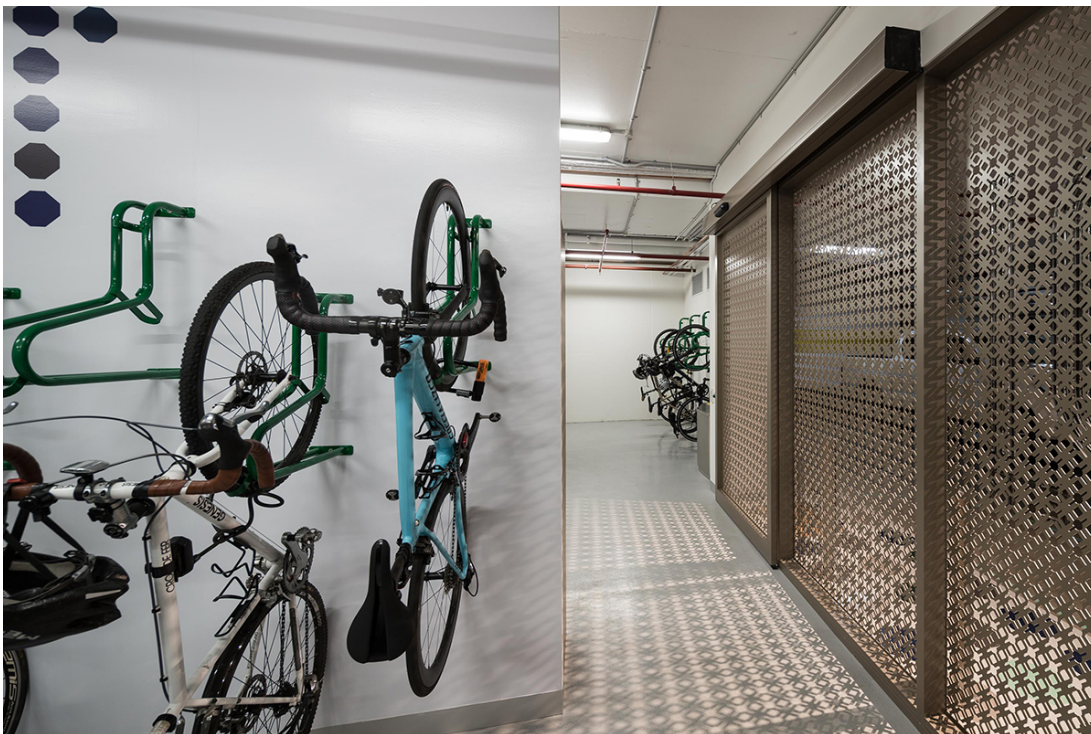
record Automatic Doors were engaged to carry out the installation of three STA 21 automatic door operators. Working closely with Enfold, record assisted in ensuring the project was delivered on time and an aesthetically pleasing installation was achieved.

The Bike entry consisted of a single sliding STA 21 operator with an aluminium door and frame. A custom designed screen was installed to visually enhance this entry as well as provide ventilation and security.

Male and female entries included STA 21 operators installed within the ceiling space to create a complete frameless look without compromising security or access.

101 Miller Street, North Sydney

Case Study



101 Miller Street, North Sydney

Case Study

