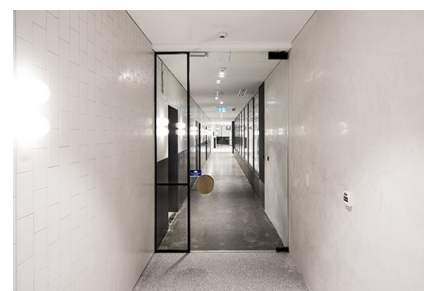
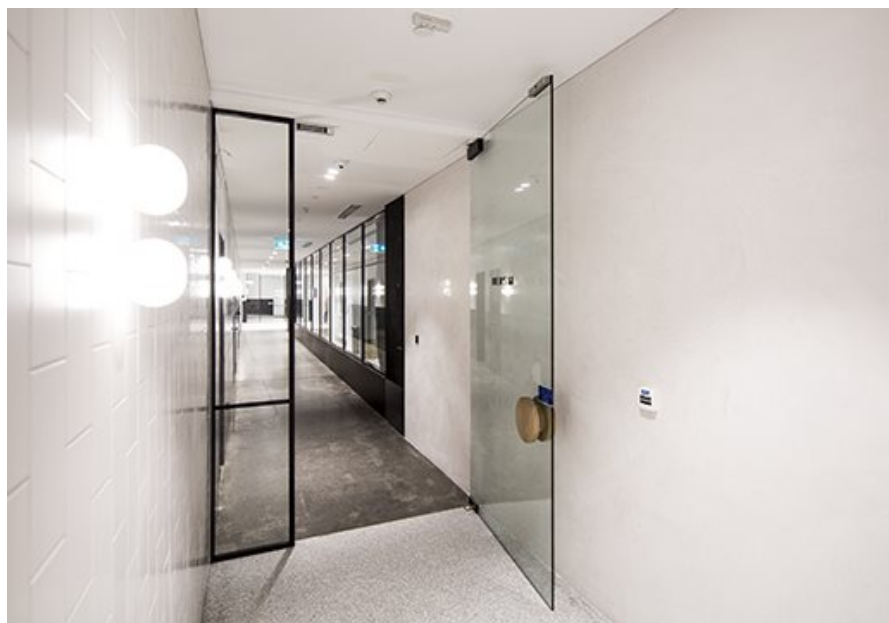


# 259 George Street, end of trip

## Case Study



The record C 127 concealed automatic swing door operator is ideal for when you don't want your automatic swing door entrance to look like an automatic swing door entrance. This is no more evident than this frameless glass swing door installed to the end of trip facilities at Memocorp's flagship 259 George Street Sydney commercial building.

The C 127 direct pivot automatic operator is usually mounted in the floor but for this entrance to the HERS bathroom at 259 George Street Sydney, the operator is mounted within the ceiling space. To ensure the pivot door is as frameless as possible, a special top patch fitting was custom designed and manufactured in record's Sydney factory, in lieu of the standard full top rail.

In this application the door is operated via and card reader outside and a ceiling mounted activation sensor inside. The door is secured by an electromagnetic lock.

## 259 George Street, end of trip

### Case Study



## 259 George Street, end of trip

### Case Study

